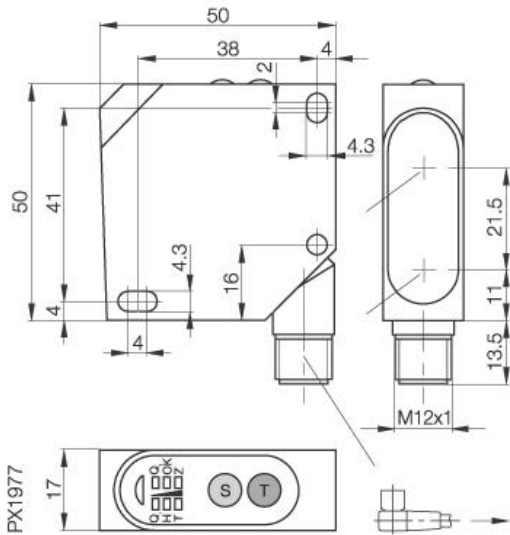


**Photoelectric Sensor**  
**BOD 26K-LBR05-S115-C**  
**Sn=300mm**  
**Distancesensor**



**Common Data**

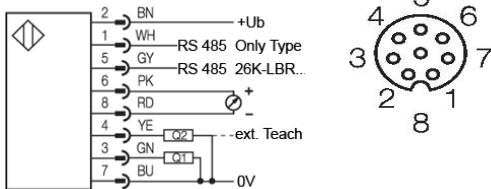
Series	BOD
Sensortype	Distancesensor
Switching frequency	1000 Hz
Rated operating distance Sn in mm	300
asured operating distance Sa	80...300mm
Indication Supply Voltage	yes
Ambient temperature	-10...+60°C
Light class 2	Laser, red, 650nm, Protection
Blind zone / min Reflector distance	80mm
Special function	Analog output 4...20mA, Interface
RS485	analog

**Mechanical Data**

Measurements	50X50X17
Housing material	ABS impact resistant
Material of sensing face	PMMA
Degree of protection	IP67
Connection	Connector S115
Weigth	43g
Recommended connector	BKS-S139-PU-05

**Electrical Data**

Current	DC
Switching function	analog / normally-open
Output	4...20mA/PNP
Rated operational voltage Ue	24V
Rated operational current Ie	100mA
Supply Voltage	18...30V
Frequency of Supply Voltage	DC
No-load supply current	<40mA
Short protection	yes
Protected against polarity reversal	yes
Output resistance	≤500 Ohm at Analog-Out



Utilization categories  
 Insulation class

Datasheet number:

Definitions see general catalog.  
 If not otherwise noted, ratings according to  
 IEC 60947-5-2 (DIN EN60947-5-2)

Balluff GmbH  
 Schurwaldstrasse 9  
 73765 Neuhausen a.d.F.  
 Phone (07158) 173-0 Fax (07158) 5010

Datenblatt by CD-ROM - 04/2007

**BALLUFF**  
 sensors worldwide